

FOR LEASE

210 CARRALL STREET

CHARACTER GASTOWN LIVE/WORK OPPORTUNITY



corbel
COMMERCIAL REAL ESTATE SERVICES

ROBERT THAM
604.609.0882 Ext. 223
robert@corbelcommercial.com

MARC SAUL*
604.609.0882 Ext. 222
marc@corbelcommercial.com

*Personal Real Estate Corporation.

THE LOCATION

The Abrams Block | 210 Carrall Street is located in historic Gastown, an internationally-renowned heritage zone, both a bustling tourist destination and a trendy gathering place for locals. Characterized by cobblestone streets, brick and timber heritage buildings and abundant historical charm, the high-traffic neighbourhood houses many of the city's hottest restaurants and retail stores. ½ Block to the east of the newly developed Blood Alley Development by Westbank, which features 142 units, atop retail, restaurant and lounge spaces at grade, a public plaza, and Vancouver's newest live music performance venue.

The Abrams Block neighbours some of Vancouver's Michelin-recommended restaurants including L'Abattoir and PIDGIN, among other popular eateries including Tacofino, Di Beppe and Donnellan's Irish Pub, & is served by several transit routes including the SeaBus terminal, Waterfront SkyTrain Station, the West Coast Express, and is just blocks from several public parkades.





THE FEATURES



Stunning newly renovated character live/work commercial unit complete with high end fixtures located in the heart of historic Gastown.



Bright unit featuring exceptional ceiling heights and large operable windows.



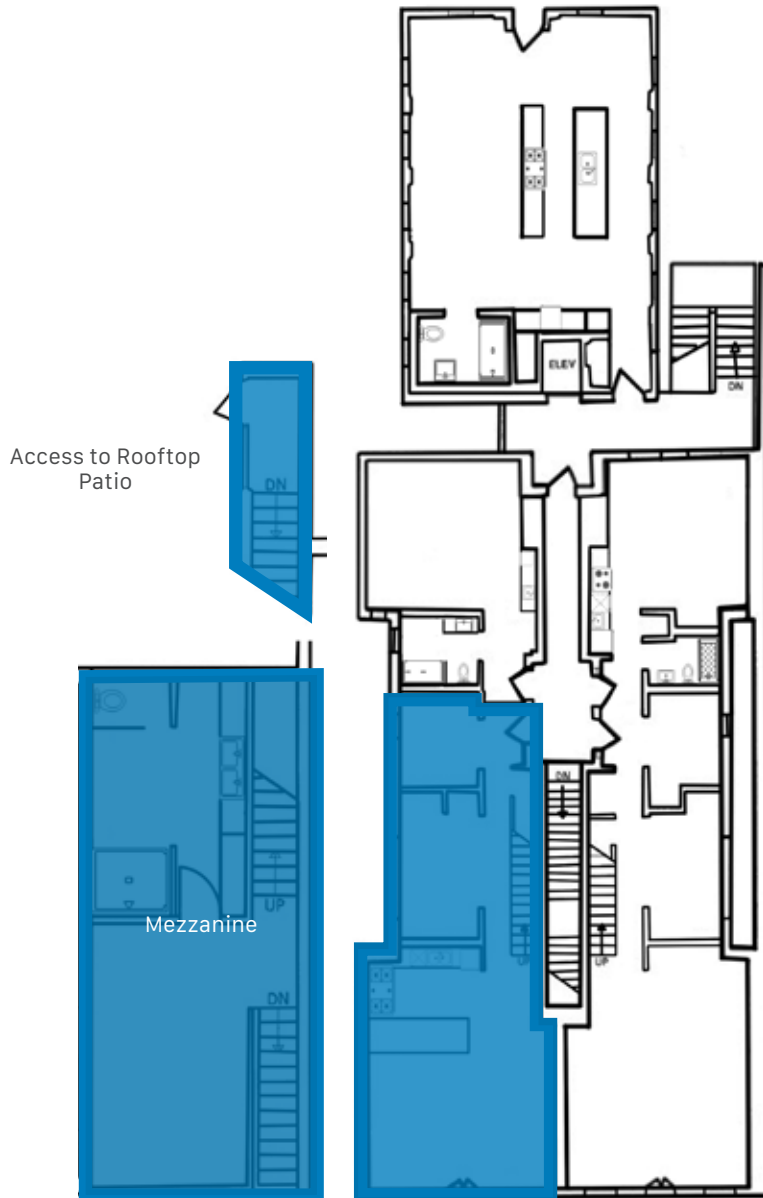
State-of-the-art design by Merrick Architecture with high quality finishes throughout.



Located in a high foot traffic area, surrounded by numerous boutique retailers, popular cafés, and lounges.



Excellent transit access, just steps away from Waterfront SkyTrain Station and numerous transit lines.



- FULL KITCHENETTE
- CONFERENCE ROOM
- SEMI-PRIVATE ROOFTOP PATIO
- 2 MODERN WASHROOMS WITH 2 SHOWERS AND 1 TUB

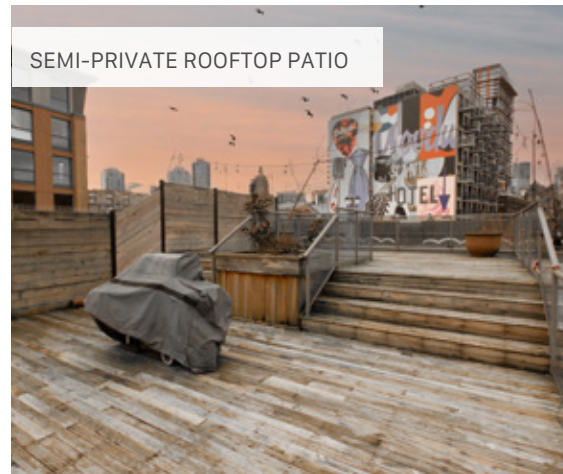
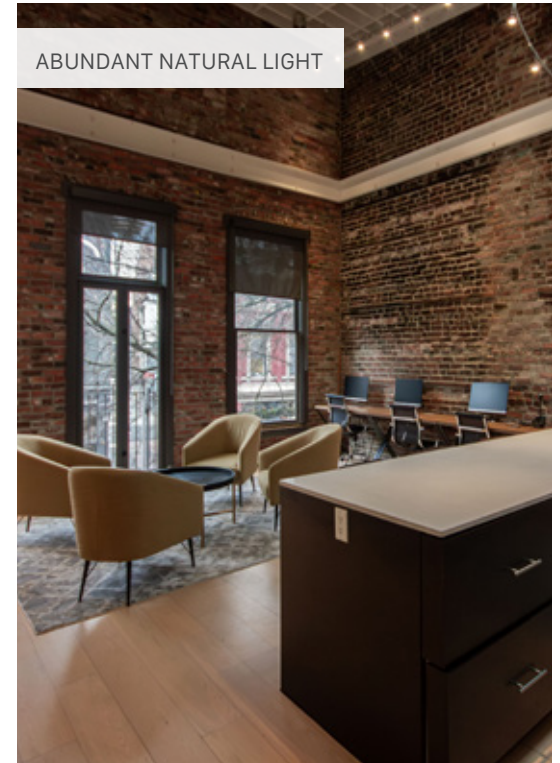


SIZE: ¹	GROSS RENT: ²	AVAILABILITY
1,549 SF (Approx.)	\$4,905.17/month + GST	Immediately

¹All sizes are approximate and subject to verification.

²Gross rent currently equates to this amount plus GST. Lease to be fully triple net. Estimated additional rent is \$14.00 (2024).

*Floor plan may not be 100% accurate and is subject to verification.





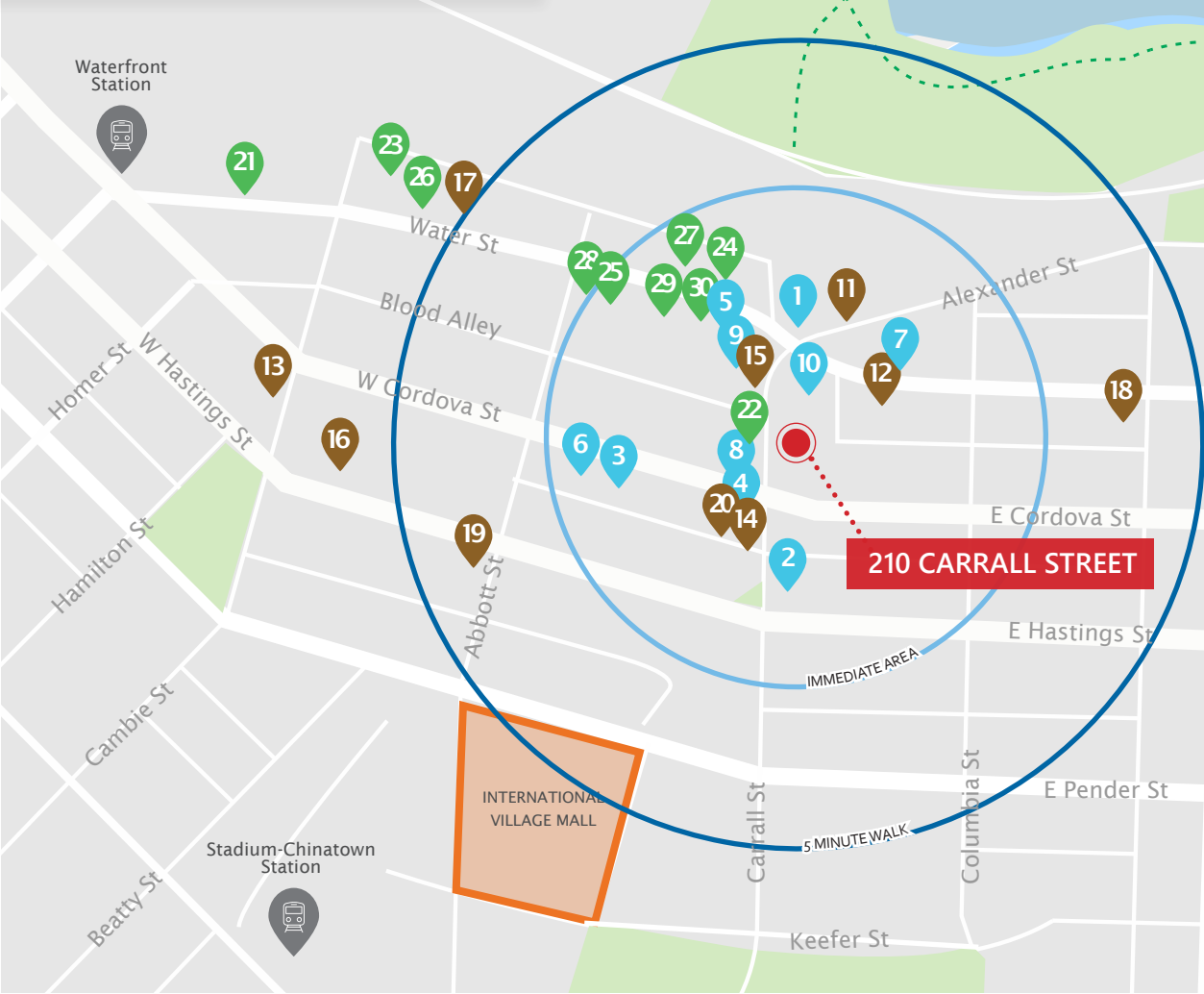
WALK SCORE

Walker's Paradise
Daily errands do not require a car



TRANSIT SCORE

Rider's Paradise
World-class public transportation



DINING + COCKTAILS

1. LOCAL Gastown
2. PiDiGiN Restaurant
3. GRETA Bar YVR
4. Di Beppe
5. Röosh
6. Sooda Korean BBQ
7. Zoomak Korean Tavern
8. Kozak Ukrainian Restaurant
9. L'Abattoir
10. Robba da Matti

COFFEE + CASUAL FARE

11. Soft Peaks Ice Cream
12. Milano Espresso Lounge
13. Revolver
14. East Van Roasters
15. Twisted Fork
16. Purebread
17. Café Kitsuné
18. Cadeaux Bakery
19. Prado Cafe
20. Nelson the Seagull

SHOPPING

21. Herschel Supply Co.
22. Le Labo
23. Kit and Ace
24. Aesop
25. COS
26. Maison Kitsuné
27. CNTRBND
28. Informs Interior
29. NEIGHBOUR
30. RODEN GRAY



ROBERT THAM
604.609.0882 Ext. 223
robert@corbelcommercial.com

MARC SAUL*
604.609.0882 Ext. 222
marc@corbelcommercial.com

*Personal Real Estate Corporation.

